

**Corporate Presentation**



# INDEX



- Background
- Business-lines
- Core Strength

# BACKGROUND



# Background



- Established in 1984
- Technocrat Promoted Group
- 1<sup>st</sup> Company to avail Venture Capital Funding through ICICI
- Listed Company



# Mission



**PRAJ is committed to delivering reliable, cost effective, environment friendly solutions for maximizing prosperity of our customers. Further, PRAJ endeavors to deliver Innovative, future perfect technologies that can withstand the test of time.**



# Business Lines



# Business Lines



## Technology & Plants for:

- Ethanol production
- Biodiesel
- Beer production
- Wastewater treatment and
- Bionutrients for Ethanol industry
- Evaporation Systems







# ETHANOL TECHNOLOGY, PLANT & EQUIPMENT



# Leadership



- Over 350 references from Australia to Peru
- Largest resource base for ethanol industry



# Ethanol Technology



- Liquifaction & Saccharification
- Fermentation
- Distillation
- Dehydration

**HIFERM\***  
FERMENTATION SYSTEMS

**ECOFINE\***  
DISTILLATION SYSTEMS

**ECOMOL**  
Fuel Ethanol Plants

# HIFERM Fermentation Technology



## For starch bearing Feedstock

- Corn ● Wheat
- Sorghum ● Rice ● Cassava, etc.

## For sugar bearing Feedstock

- Cane Molasses Cane Juice – Secondary / Primary / Filterate / Mixed Syrup
- Sweet Sorghum (juice/syrup)
- Sugar Beet - (Juice/syrup/molasses)



# HIFERM Fermentation



- High fermentation efficiency
- Water and energy conservation.



# ECOFINE Distillation



- Plants optimized for quality, energy consumption and operational ease.
- Multi-pressure, Atmospheric and Energy Integrated distillation.
- Plant automation based on SCADA / PLC system



## Partial References - India



- Bajaj Hindusthan ( 8 Projects)
- Balrampur Chini Mills (9 Projects)
- Radico Khaitan (7 Projects)
- United Spirits (15 Projects)
- Bannari Aman (4 Projects)
- Thiru Arooran Sugars (4 Projects)
- Sakthi Sugars (2 Projects)
- Seagram India
- Triveni Engineering
- Mawana Sugars
- Sagar Sugars
- Dalmiya Cements
- AB Sugars





## Partial References - International

---

- British Sugar, Wissington, UK
- Anklam Bioethanol (Danisco Group), Germany
- Biowanze SA,(Sudzucker Group), Belgium
- Prophex Bioproducts Ltd., Bulgaria
- S.C.Amochim S.A., Romania
- Konya Seker Sanayi Veticaret A.S., Turkey
- Cilion - 3 projects in California, USA
- GoEthanol, USA
- Australian Bio-Fuels Pty, Ltd., Australia
- Bilfinger and Bwenger Services for CSR Sugar, Australia
- Marubeni Techno Systems Corporation, Japan



## Partial References

---

- Gasohol de El Salvador
- Incauca SA, Cauca, Colombia
- Providencia SA, Valle, Colombia
- Mayaguez SA, Colombia
- Risaralda SA, Colombia
- Manuelita SA, Colombia
- Khon Kaen, Thailand

# Plant Views





# Plant Views



# Plant Views





# Plant Views





# Plant Views



# Plant Views





# Plant Views



A fuel nozzle is shown with a sunflower pattern on its body, symbolizing biodiesel technology. The nozzle is set against a background of a parking lot with several cars. The text "BIODIESEL TECHNOLOGY, PLANTS AND EQUIPMENT" is overlaid on the left side of the image.

**BIODIESEL  
TECHNOLOGY,  
PLANTS AND  
EQUIPMENT**



# Biodiesel Plants



Leveraging over two decades of experience in agri-based processes for renewable Biofuels, PRAJ now offers technology, plants, and services for **Biodiesel** production.





# Biodiesel Plants

---

## Special features of PRAJ's Biodiesel Technology

- Wide range of standard capacities: 100 to 500 MT/Day.
- Flexibility to operate with Multiple vegetable oil feedstocks.
- Proprietary High efficiency cascade transesterification process
- Advanced distillation / evaporation designs
- Reduced operations for centrifugal separations.

# Biodiesel Plants



## Special features of PRAJ's Biodiesel Technology

- High yields with minimum losses.
- Low consumption of chemicals.
- In-plant integration to minimize energy & fresh water needs.
- Negligible waste-water due to in-process water recycle.
- High purity glycerol as by-product

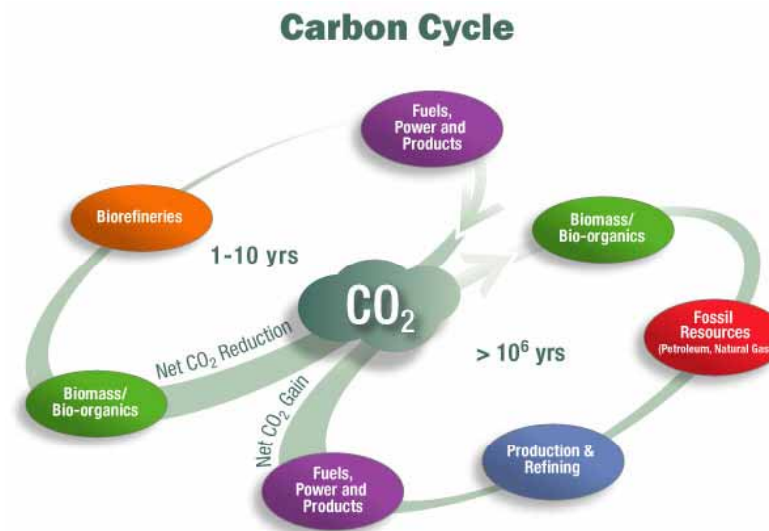


# Biodiesel Plants



## Praj Expertise for Biodiesel Plants:

- Agriculture of oil sources – Backward integration for feedstocks
- Process Oleo chemistry
- Reaction kinetics and process development
- Pilot studies Engineering and technology commercialization







# Biodiesel Plants

## Feedstocks

- Refined Oil
- Raw tree borne oils -  
Jatropha or
- Pongamia
- Raw veg. oils like canola,  
sunflower, soybean.
- Degummed oil (<2% FFA)
- Soybean or rapeseed oils.
- Degummed oil (>2% FFA)
- Palm oil or acid oil.





# Agronomy: Energy Crops

# Agronomy Group



- Focus -Develop Energy crop varieties
  - Not competing for food applications
  - High farm productivities
  - Low water requirements
  - Versatility for global plantation
  - High energy gain
  - High CO<sub>2</sub> absorption ratios
  - Low cultivation costs

# Energy Crops



## Bio-ethanol

Sweet Sorghum

Grass Varieties  
(Cellulosic)

## Bio-diesel

Non-edible Oil  
Crops

High Oil  
containing Algae



# Objective



	Agro-traits	Compositional traits
Sweet Sorghum	<p>Small growth cycle</p> <ul style="list-style-type: none"> <li>• High biomass yields</li> <li>• Low thermal / photo sensitivity</li> <li>• Large harvesting window</li> <li>• Low foliage</li> <li>• Flexibility of soil conditions</li> <li>• Flexibility to temperate climates</li> <li>• Resistance to fly and borer</li> <li>• Low water / fertilizer needs</li> </ul>	<ul style="list-style-type: none"> <li>• High juice and grain yields</li> <li>• High sugar content</li> <li>• High fiber content</li> <li>• Post harvest stability</li> <li>• High juice purity</li> <li>• Low juice salts and NFS</li> <li>• Low lignin varieties</li> </ul>
Grasses	<p>Short duration</p> <ul style="list-style-type: none"> <li>• High biomass yields</li> <li>• Low thermal / photo sensitivity</li> <li>• Multi-cut high yields and windows</li> <li>• Flexibility of soil conditions</li> <li>• Flexibility to temperate climates</li> <li>• Resistance to pests</li> <li>• Low water / fertilizer needs</li> </ul>	<ul style="list-style-type: none"> <li>• High Cellulose yields</li> <li>• Low hemi-cellulose</li> <li>• Low Lignin content</li> <li>• Low fiber content</li> <li>• High enzymatic digestibility</li> <li>• Low ash content</li> </ul>
Non-edible oil crops & Algae	<p>Fast growth cycles</p> <ul style="list-style-type: none"> <li>• High biomass yields</li> <li>• Low thermal / photo sensitivity</li> <li>• Flexibility to temperate climates</li> <li>• Resistance to bacterial, viruses and fungi attacks</li> <li>• Low mineral needs</li> <li>• High salinity tolerance</li> </ul>	<ul style="list-style-type: none"> <li>• High oil yields</li> <li>• High Triglycerides</li> <li>• Low free fatty acids</li> <li>• Low phospholipids</li> <li>• Elimination of FS enzyme</li> <li>• High CFPP quality</li> </ul>

# Proposed Activities

---



- Selection / Development of Varieties
- Multi-locational Field trials
- Seed systems – Bulking
- Farming systems / processing techniques
- Offer Client Services
  - Techno-commercial Feasibility Testing
  - Commercial farming developments

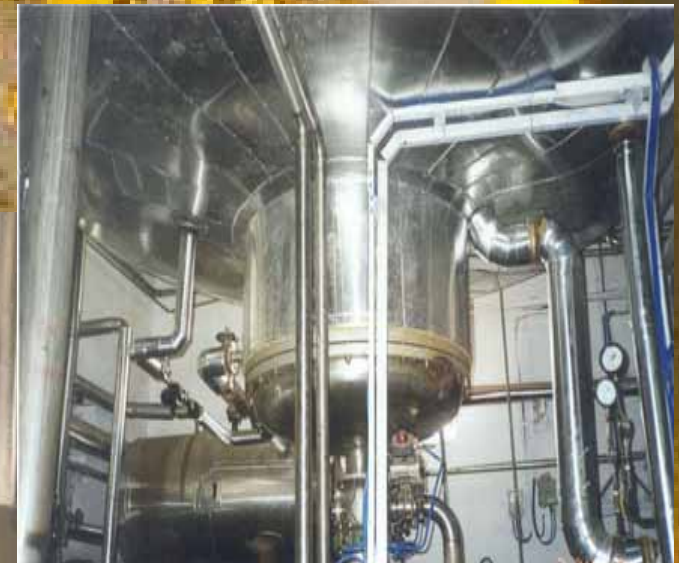
# Resources

---



- Experts from
  - Botany & Plant tissue culture
  - Agronomy and Agriculture (Farming )
  - Breeding technology
  - Algology
  - Agriculture Engineering
  - Agriculture management

# Brewery Engineering





# Brewery Engineering



- Process Equipment for Brewing
- Brewhouse engineering in line with DIN 8777 standards
- Energy Saving innovations Process
- Collaboration with Holverieka and Meura



**e-com BOILER**  
Boiler which saves on energy, water  
and cleaning solutions

**e-com freeze**  
For refrigeration plant energy economy

**e-com Force**  
For energy economy in water supply

## Some of our international customers...



- ➔ SAB Miller
- ➔ United Breweries
- ➔ Carlsberg (Crown Brewery Unit)
- ➔ Bhutan Breweries Limited
- ➔ Rhino Agencies
- ➔ Hieneken (Al Ahram Unit)



# Wastewater Treatment





# Wastewater Treatment & Utilization



## **Sugar based distilleries**

- Evaporation
- Biomethanation
- Biocomposting

## **Starch based distilleries**

- Thin slop Evaporation
- DWG
- DDGS
- Biomethanation

## **Breweries**

- Two Stage Aeration
- Anaerobic followed by aerobic composting
- Biomethanation





# Wastewater Treatment

A basket of technology including:

- **Biomethanation**
  - ECOMET- XT\* Mixed Tank Reactor
  - Swivel Agitators
- **Biocomposting**
  - Complete `Zero' discharge system
  - Produces valuable bio fertilizer
- **Evaporation**
  - Self cleaning mechanism
  - Substantial volume Reduction
- **Vinasse Boiler**
  - Ultimate `Zero' pollution system



# Wastewater Treatment



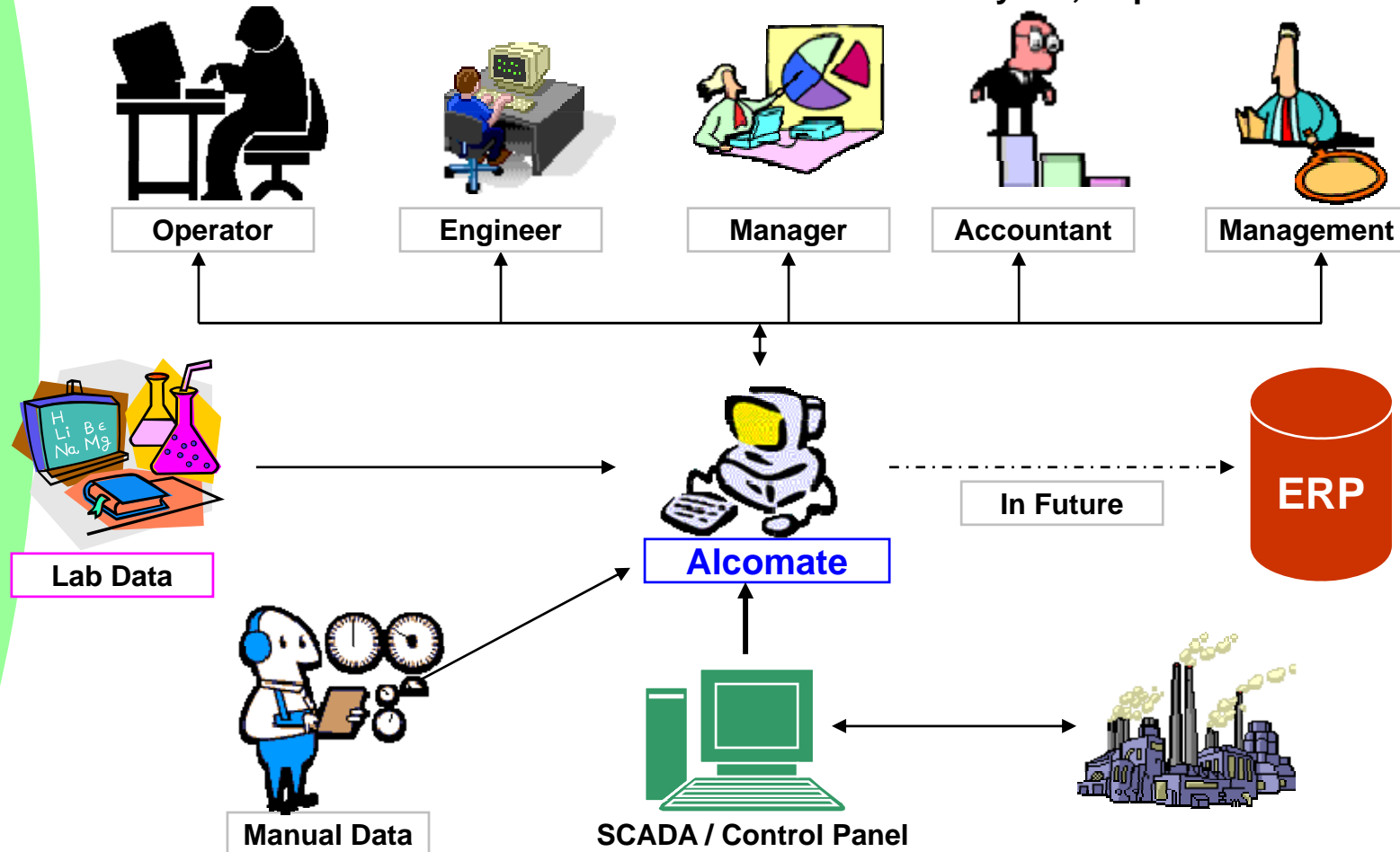
- Knowledge of upstream process leveraged for better results.
- Incorporation of innovative technologies like **Flubex**\* – a self cleaning evaporator for wastewater volume reduction.



# AlcoMate for Informed Decisions.....



- Plant Monitoring
- Analysis, Investigate & Improve
- KPI's & Analytics, Reports
- Performance



# AlcoMate

## Key Features.....

---



- Right information to right people
- Tracking of Key Performance Indicators and bench marking.
- Auto generation of reports : Daily / Weekly / Monthly.
- Pile of data as an Asset – To learn / Analyze / Synthesize.
- Built in Trouble shooting guide.
- Ready access available from anywhere ( over intranet )
- Alerts / Notifications – e.g. process disturbance.
- Collaboration with consultants, suppliers, contractors etc to get support
- Data collection easier, authentic and time saving.



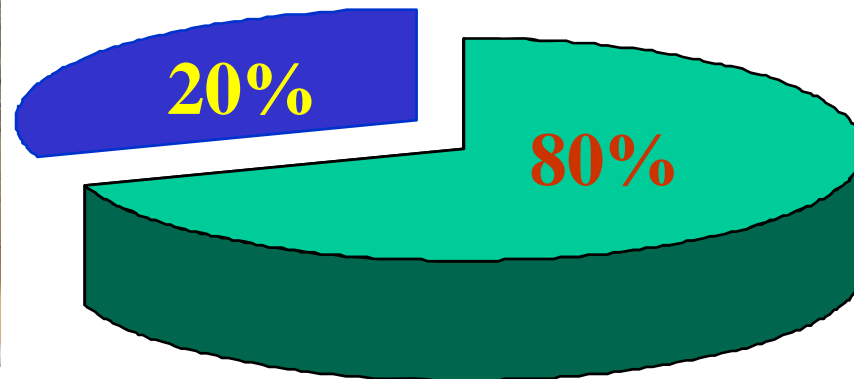
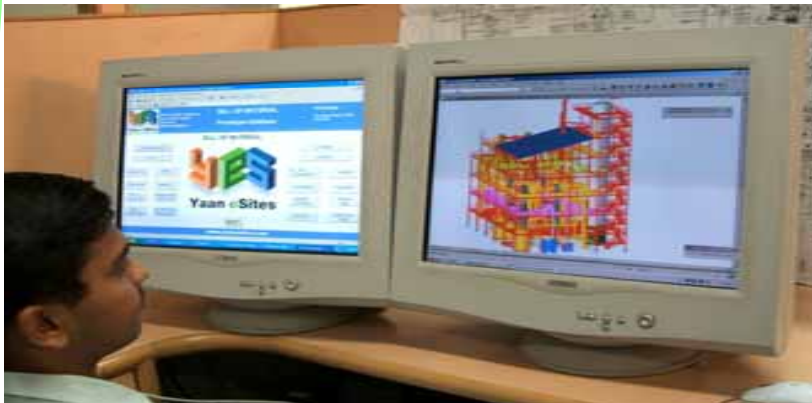
# Core Strengths



# Core Strength



- Out of the staff strength of  $> 800$ , 80% are Engineers and Technicians.

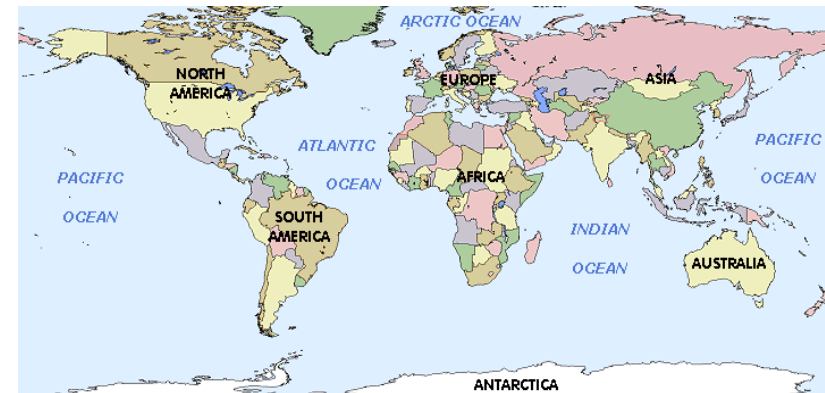




# Core Strength



Over 4000 man-years  
of experience in  
alcohol technology.



## Core Strength



Design and simulation software including P4D, Chemcad and other proprietary softwares.





# Core Strength



- ➔ Process & Application Engineering with 7 Patented Products/Processes
- ➔ Manufacturing & R & D backed delivery
- ➔ Experience & Expertise



## Manufacturing unit – 1: Sanaswadi



Total Area 18,500 sq. mtr (4,500 Sq.mtrs covered space).



# Manufacturing unit - 2 : Sanaswadi



2400 Sq.mtr. Covered space





## Manufacturing unit- 3: EOU (Markal)



4400 sq.mtr. (1700 sq.mtr. Covered area)





## Manufacturing unit- 4 : SEZ Kandla



The covered area  
15220 sq mtrs.  
The annual  
fabrication  
capacity would be  
approx 3000 tons.



# Project Management



A strong project management team with global experience



# Quality Assurance



- Dedicated Quality Assurance Team
- Quality Assurance Plan for each equipment, raw material and bought outs.
- Personnel trained as Lead Assessor and in NDT Level III, Certified Welding Inspector, British Welding Society.



# Standards & Codes



- AD Merkblätter
- API 650
- TEMA
- BS
- AS 1210
- IS 2825



# Certification



ISO 9001:2000  
Certificate : 041000279

# Matrix-The Innovation Center



# Matrix-The Innovation Center



- Instrumentation Laboratory
- Analytical Laboratory
- Wet Chemistry Section
- Bioengineering Section
- Pilot Facilities





# Matrix-The Innovation Center



Explore and Develop viable Bio-Engineering Technologies for converting Renewable Agro-molecules into Beneficial Bio-products and Energy



# Matrix-The Innovation Center



- Initiated alternate energy crops programmes including tapioca, tropical sugar beet and sweet sorghum.



# PRAJ : Locations



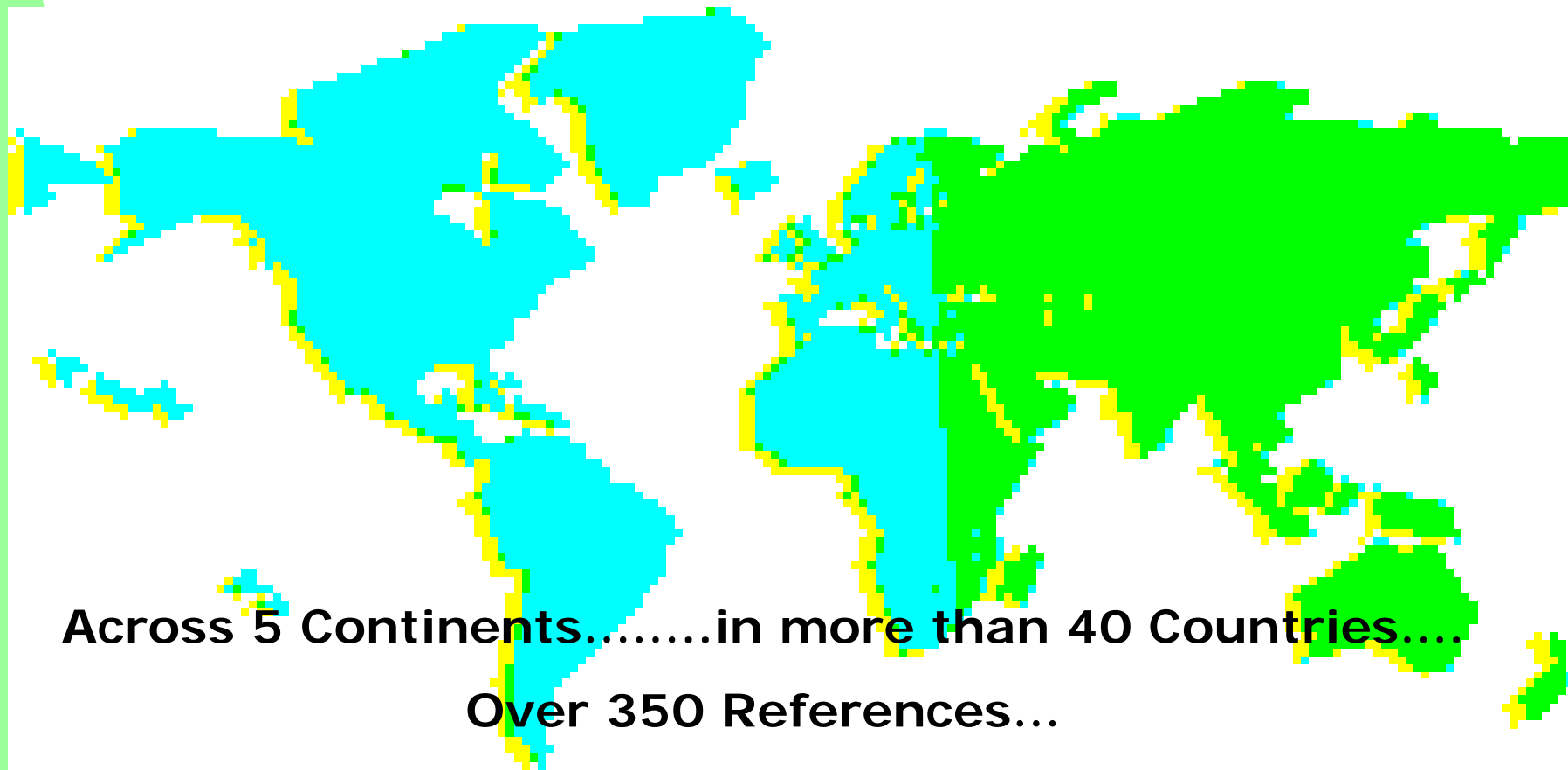
# PRAJ : Joint Ventures & Subsidiaries



BioCnergy is a Joint Venture with Aker Kvaerner, Netherlands for European Biofuels market. Praj holds 60% in the JV while AK holds 40%. The operations are based out of Zoetermeer, The Netherlands.



Praj Schneider (formerly C.J. Schnieder) is a 100% subsidiary of Praj Industries. It is an engineering Company focused upon balance of plant design and engineering. The Company is based in Omaha, Nebraska.



**Across 5 Continents.....in more than 40 Countries...**

**Over 350 References...**

**From Australia to Peru...**





Please do visit us at

[www.praj.net](http://www.praj.net)

Contact us at

[Info@praj.net](mailto:Info@praj.net)

# Thank You

**USE FUEL ETHANOL**  
**Renewable...Clean...Green**